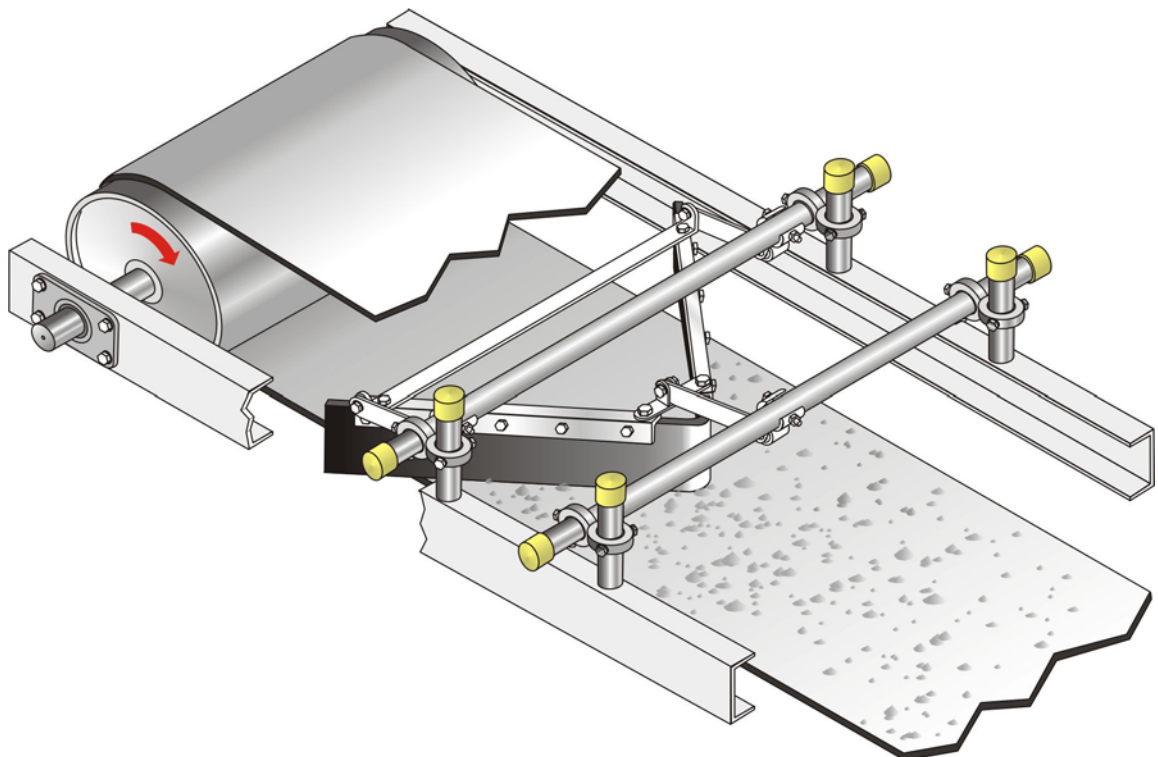


Technical Documentation

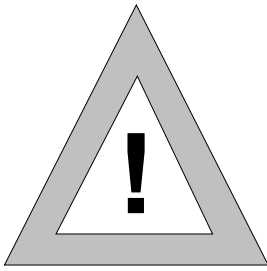
VIBREX® Plow Scraper



- 1. Safety instructions**
- 2. Mounting instructions**
- 3. Maintenance**
- 4. Spare and wear parts**
- 5. Dimension sheet, general and component drawings**

1. Safety instructions

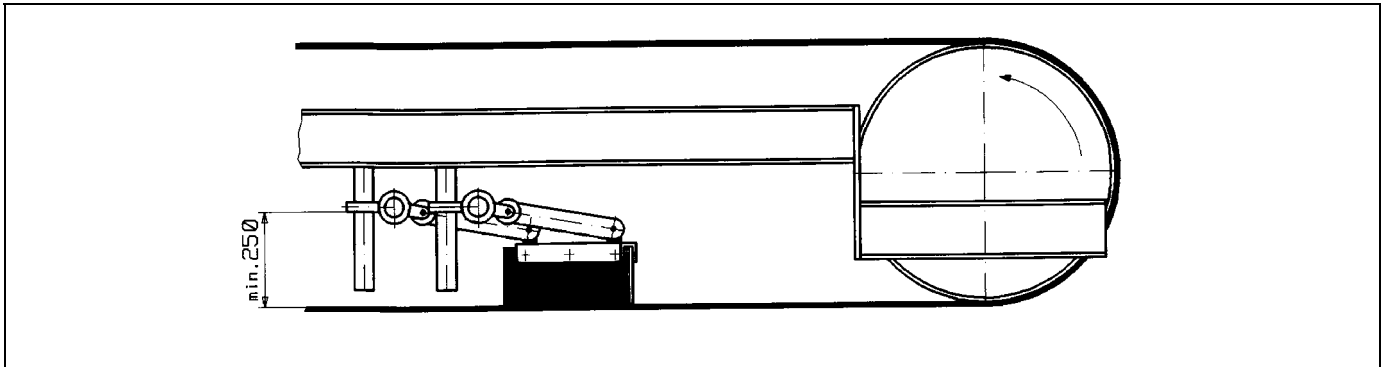
Working at running conveyor belt is dangerous!



Stop conveyor belt before start of mounting and, if necessary, the inlet in the transfer chute and secure against unauthorized restarting.

Observe the regulations for prevention of accidents.

Only trained and practised personnel is allowed in coordination with the individual safety regulations and the mounting conditions to adjust the VIBREX conveyor belt cleaners at running conveyor belt. The control and maintenance personnel has to be instructed according to the safety regulations before the conveyor belt is taken into operation.



2. Mounting

Drawing No. 2.03.3.2554-

- a) Pre-mount plow scraper consisting of stiffening angle (pos. 7), U-profile (pos. 8), rubber strip (pos. 9) and fixing link (pos. 10). Install cleaner as near as possible in front of the tail pulley centrally on the lower belt. The leg ends show into the direction of the tail pulley.
- b) Attach the pipes (pos. 1) at the belt construction according to the local conditions.

Drawing No. 2.03.3.2477-

- c) Attach pipes (pos. 2) with distance D out of schedule to the pipes (pos. 1) at the construction.
- d) Screw the flat iron of the spring arm (pos. 6) onto the fixing link (pos. 10) respectively onto the stiffening angle (pos. 7). Screw the fixing clamps of the spring arms (pos. 6) together with the axles (pos. 4 and pos. 5).
- e) Push positioning ring supports (pos. 3) onto the pipes (pos. 1 and pos. 2) and onto the axles (pos. 4 and pos. 5). The distance from the upper edge of the lower belt up to the lower edge of the positioning rings of the pipes (pos. 1 and pos. 2) must be at least 250 mm. Tighten all positioning ring screws.
- f) The angle of the spring arms (pos. 6) can be individually changed. Optimal = 5° - 45° .
- g) Plow scrapers are mounted floating and therefore the cleaning effect has to be observed and, if necessary, adjust the angle of the spring arms more flat to achieve a higher weight load.

3. Maintenance

According to general experiences with sophisticated machine elements the following maintenance cycles should be observed and, if necessary, adapted to the operational requirements:

- a. Weekly inspection and checking of the fixing elements.
- b. Monthly inspection and checking of the fixing elements.
- c. Quarter or half year checking of the final wear date and, if necessary, exchange or preliminary exchange of the wearing elements.

4. Spare and Wear Parts

according to part list in drawing No. 2.03.3.2554-

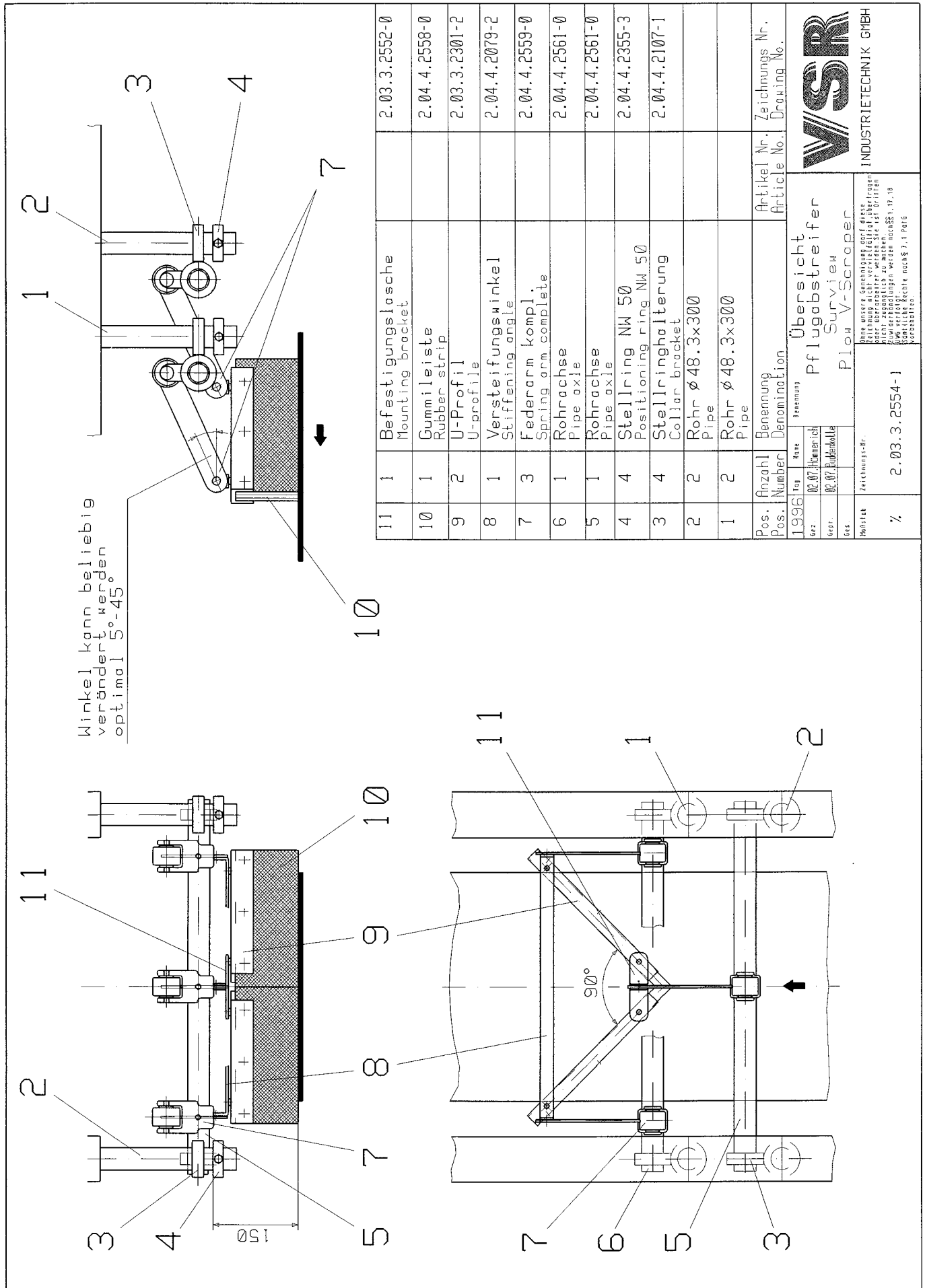
5. Drawings

The following drawing nos. belong to this documentation:

2.03.3.2477-
2.03.3.2554-
2.04.4.2107-
2.04.4.2561-
2.03.3.2559-
2.03.3.2301-
2.04.4.2558-

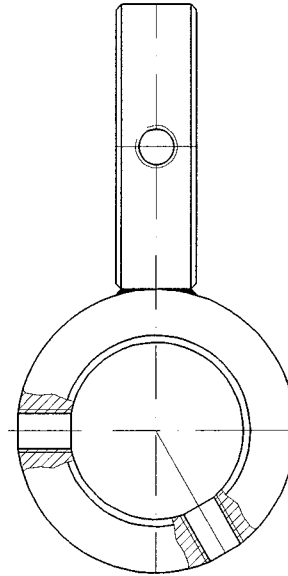
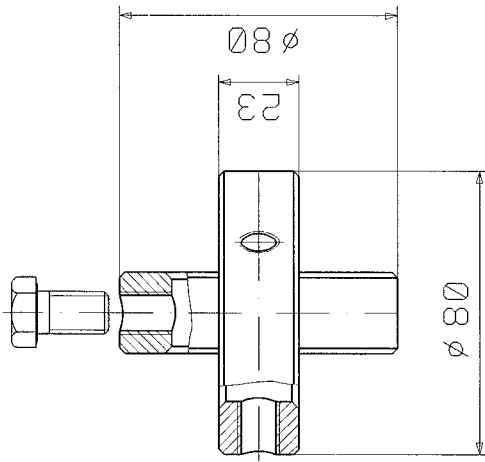
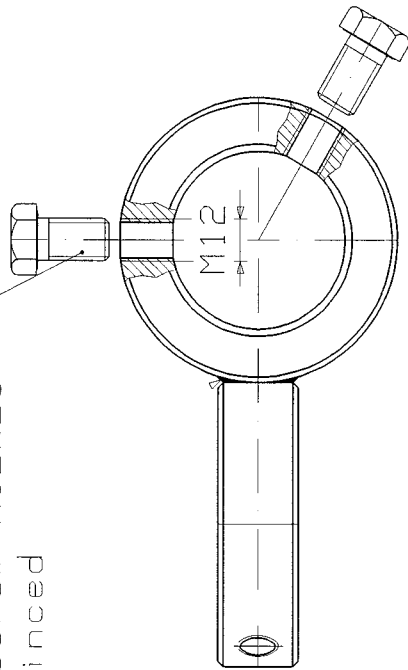


Technical modifications reserved



Sechskantschraube M12x20
DIN 933, verzinkt

Hexagonal screw M12x20
DIN 933, zinned



1996	Tag	Name
Gez.	02.07.	Hümmerich
Gepr.	02.07.	Budenkette
Ges.		

ModStab Zeichnungs-Nr.

% 2.04.4.2107-2

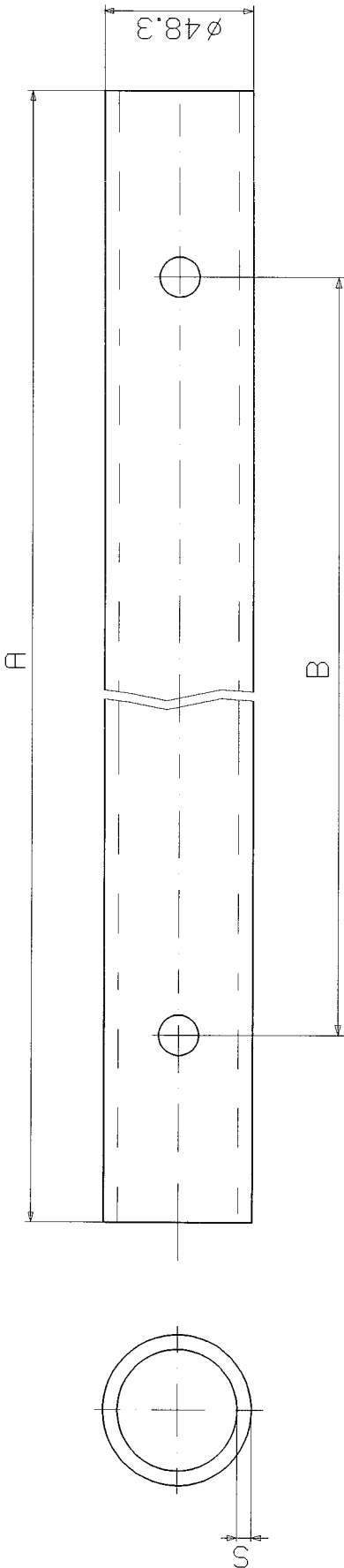
Stellringhalterung
für Pflugabstreifer
Collar bracket
for plow V-scraper

Ohne unsere Genehmigung darf diese Zeichnung nicht weiterverbreitet werden. Sie ist urheberrechtlich geschützt und darf nicht unzulässig zu machen. Zuwiderhandlungen werden nach §§ 1, 17, 18 UWG verfolgt. Sämtliche Rechte nach § 7, 1 PatB vorbehalten.

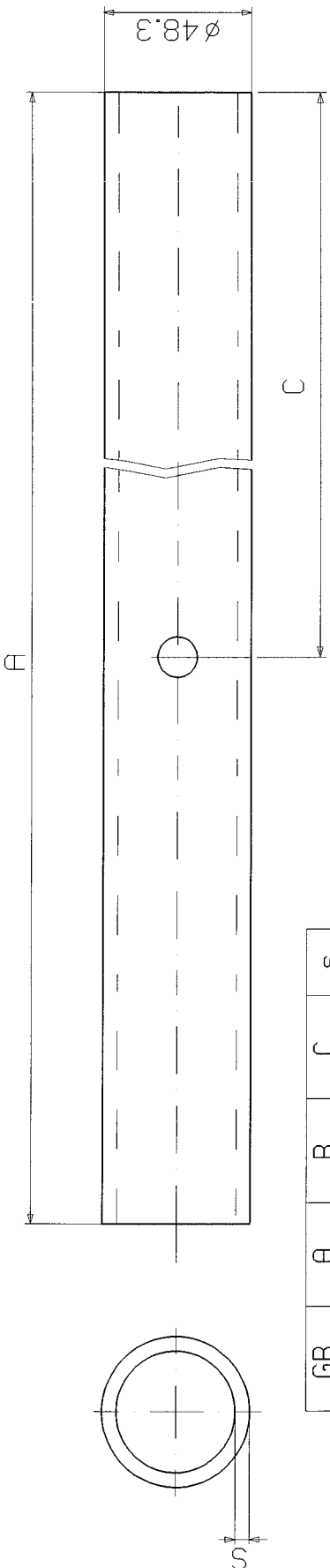


INDUSTRIE TECHNIK GMBH


Rohrachse 2 pipe axle 2



Rohrachse 1 pipe axle 1



GB	A	B	C	s
400	800	485	400	4
500	1000	585	500	4
650	1200	735	600	4
800	1400	885	700	4
1000	1600	1085	800	6
1200	1800	1285	900	6
1400	2200	1485	1100	8
1600	2400	1685	1200	8
1800	2600	1885	1300	8
2000	3000	2085	1500	8

1995	Tag	Name	Benennung	Rohrachsen für Pflugabstreifer pipe axle for plow V-scraper	 INDUSTRIE-TECHNIK GMBH
Gez.	23.08.	Hümmelich			
Gepr.	23.08.	Furdenkötter			
Ges.					
Maßstab	Zeichnungs-Nr.		Ohne unsere Genehmigung darf diese Zeichnung nicht vervielfältigt, übertragen oder überarbeitet werden. Sie ist Dritten nicht zugänglich zu machen. <small>SS 1, 17, 18</small> Alle Änderungen werden nach § 7, 1 Pa16 vorbehalten.		
%	2.04.4.2561-0				

